



# Doreen's Project

- 54 Bed Transformational Shared Living Community
- Harbor City, Los Angeles, California
- Pathways from Crisis to Independence

# Mission

- Exodus Life Change is dedicated to building the bridge between homelessness and permanent housing through lived experience, structured housing navigation, and innovative shared living models.
- Our mission is to close the gap that exists between emergency shelter and long-term stability by creating structured pathways that empower individuals while maintaining accountability, dignity, and sustainable support.



Modern Kitchen

Standardized Shared Bathr



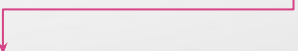
Doreen's Project is a 54-bed shared living community  
Serving Individuals Experiencing:

- Homelessness

- Re-Entry

- Substance Recovery

The program creates a structured pathway from crisis to stabilization to full independence.



# The Challenge

- Los Angeles faces a severe housing and homelessness crisis.
- Structured housing pathways are critical for long-term success.
- Key barriers for vulnerable populations include:
  - Limited transitional housing
  - Reentry challenges after incarceration
  - Substance use recovery needs
  - Mental health stabilization
  - Lack of employment opportunities



# Our Solution

---

Doreen's Project provides a progressive shared living housing model that combines:

---

- Housing stability

---

- Recovery support

---

- Life skills training

---

- Economic empowerment

---

- Entrepreneurship opportunities

---

Members progress through structured stages toward independence.

# What Sets Us Apart

Our Four-Tier Shared Living Model ensures members are placed based on their baseline needs — not just bed availability.



This creates a structured pathway that promotes real progress and long-term success.

# Four-Tier Shared Living Model

---

Supported Living 1 (SL1)

---

Entry-level housing with structured support

---

Supported Living 2 (SL2)

---

Continued stability with increased independence

---

Independent Living 1 (IL1)

---

Transitional independence

---

Independent Living 2 (IL2)

---

Preparation for complete independence

# Supported Living I (SL1)



- ENTRY-LEVEL RECOVERY HOUSING



- LIVE-IN HOUSE MANAGERS (EMPOWERMENT LEADERS)



- STRUCTURED DAILY SCHEDULE



- CASE MANAGEMENT FACILITATION



- SUBSTANCE-FREE ENVIRONMENT



- LIFE SKILLS AND RECOVERY PROGRAMMING



- MENTAL HEALTH STABILIZATION

# Supported Living II (SL2)



- TRANSITIONAL  
EMPOWERMENT  
HOUSING



- REDUCED  
SUPERVISION WITH  
ACCOUNTABILITY



- EMPLOYMENT OR  
EDUCATION  
ENGAGEMENT



- FINANCIAL  
LITERACY TRAINING

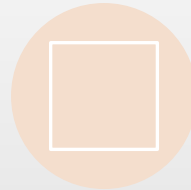


- LEADERSHIP  
OPPORTUNITIES

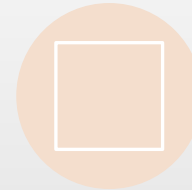


- CONTINUED  
RECOVERY AND  
PERSONAL GROWTH

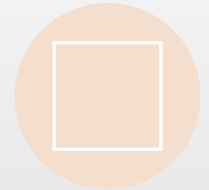
# Independent Living I (IL1)



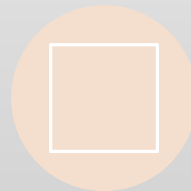
- SEMI-PRIVATE LIVING



- DAILY CHECK-INS



- TRANSITIONAL INDEPENDENCE



- EMPLOYMENT AND FINANCIAL SELF-MANAGEMENT



- MENTORSHIP OPPORTUNITIES



- PREPARATION FOR PERMANENT HOUSING

# Independent Living II (IL2)



- SELF-SUFFICIENCY & COMMUNITY REINTEGRATION



- SEMI-INDEPENDENT LIVING



- COMMUNITY LEADERSHIP OPPORTUNITIES



- CAREER PLANNING & SUCCESS



- PEER ACCOUNTABILITY

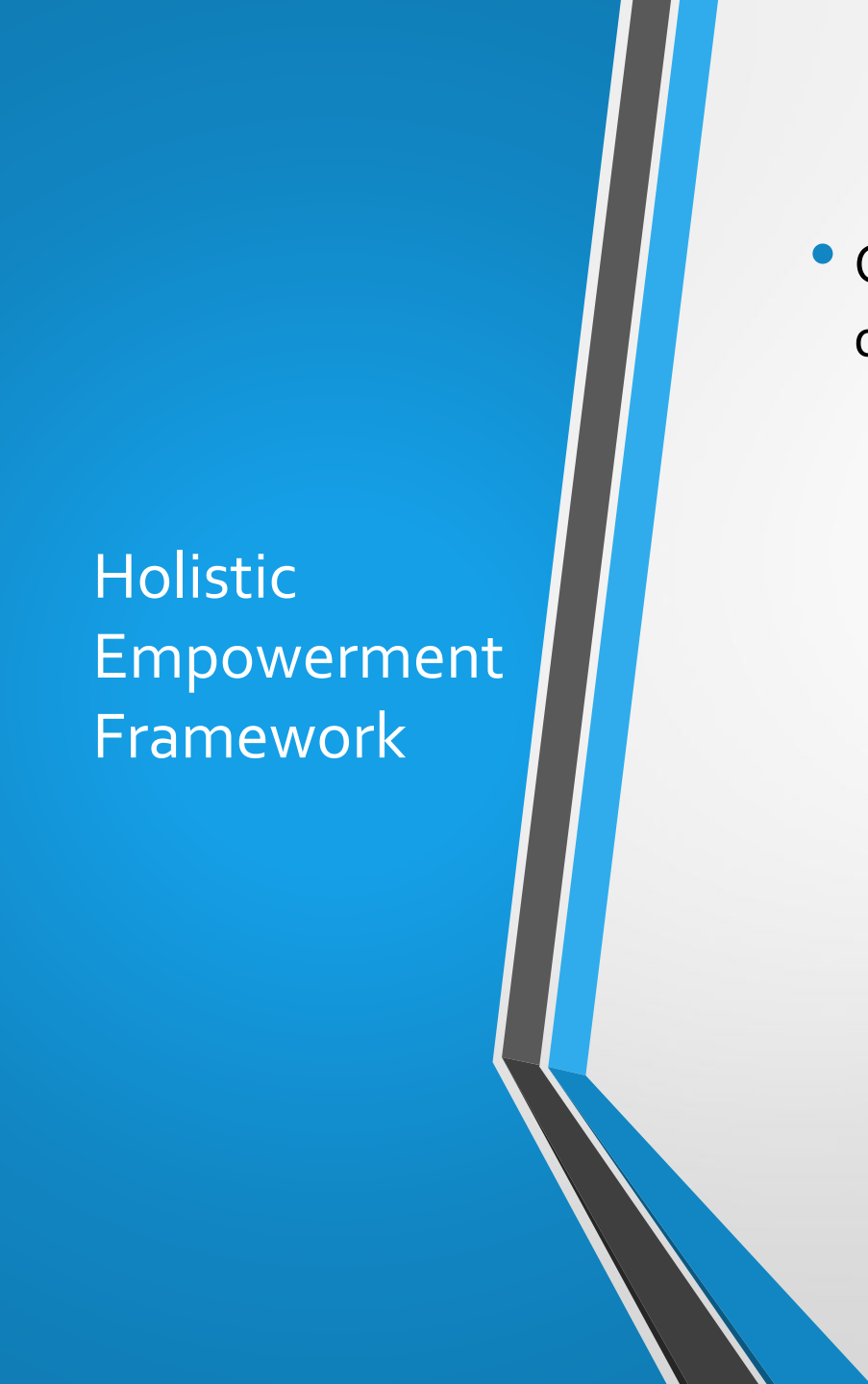


- LONG-TERM PLANNING FOR HOUSING

# Our Program Includes

Weekly Trainings in:

- Holistic Empowerment Framework
- Business Incubation Program
- Culture of Transformation



## Holistic Empowerment Framework

- Our model addresses every dimension of transformation:
  - Domestic Empowerment – sustainable housing skills
  - Social Empowerment – community and accountability
  - Spiritual Empowerment – identity, healing, and purpose
  - Economic Empowerment – employment and financial literacy

# Business Incubation Program

Members participate in our entrepreneurship program to build sustainable businesses.

The program guides participants through the Five S's:

- Structure – foundation and compliance
- Strategy – planning and direction
- System – replicable operational processes
- Sales – revenue and partnerships
- Scale – expanding impact and sustainability



# Culture of Transformation: The Four C's

- Commitment – staying the course
- Courage – facing challenges with hope
- Capability – developing the skills to succeed
- Confidence – embracing a renewed identity and purpose

# Program Capacity & Impact

## Program Capacity:

- 27 shared living units
- 54 individuals served at a time

## Projected Outcomes:

- 80-85% program success
- 65-75% employment placement
- 60% transition to permanent housing



27 Unit Property



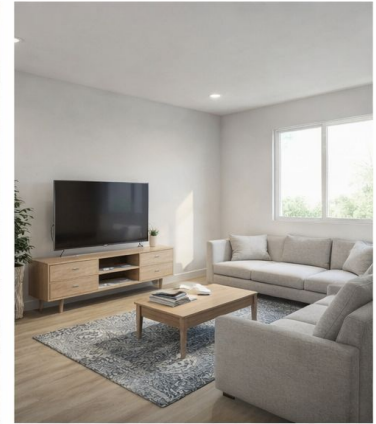
2 person-Occupancy Rooms



Standardized Shared Kitchen



Standardized Shared Bathroom



Standardized Shared Living Room

# Standardized Shared Areas

# Investment Opportunity

- We invite partnerships with:
  - Foundations
  - Impact investors
  - Government agencies
  - Corporate sponsors
  - Private donors

Together we can transform lives, restore dignity, and strengthen communities.

Website: [exodushouseno.com](http://exodushouseno.com)

Donation: [https://www.paypal.com/donate/?hosted\\_button\\_id=6...](https://www.paypal.com/donate/?hosted_button_id=6...)